

Drawing Project Rubric:

Skull in a Glass Box



Paul Cézanne,
*Still Life With
Skull*, c. 1900

Deliverable:

Finished Drawing in **Pencil** on 18" x 24" paper of skull in an imaginary box.

Requirements:

Create **Drawing** incorporating the following:

- Finished drawing of a skull in correct **Perspective**.
- Imaginary glass box surrounding skull drawn in correct **Perspective**, where outermost points of skull touch the planes of the box.

What's the Point?

To continue to build your intuitive understanding of drawing objects in **Perspective**.

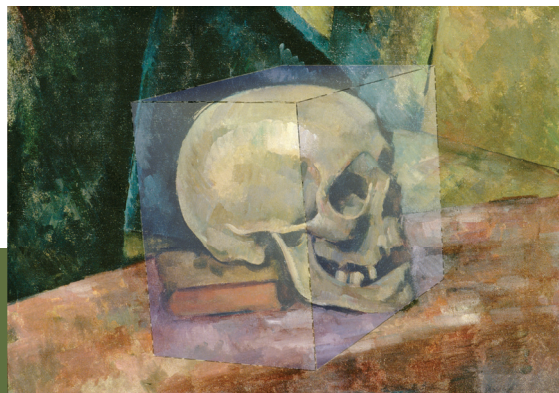
To also learn how to draw the head and skull in correct **Perspective**.

What you will be graded on:

50% Completion of *all* above requirements (25% each).

50% Craftsmanship: Clean and clear drawing including measurements as well as little to no erasure marks.

Drawing Project Rubric: *Skull in a Glass Box*



*Paul Cezanne,
Still Life With
Skull, c. 1900*

Examples:

